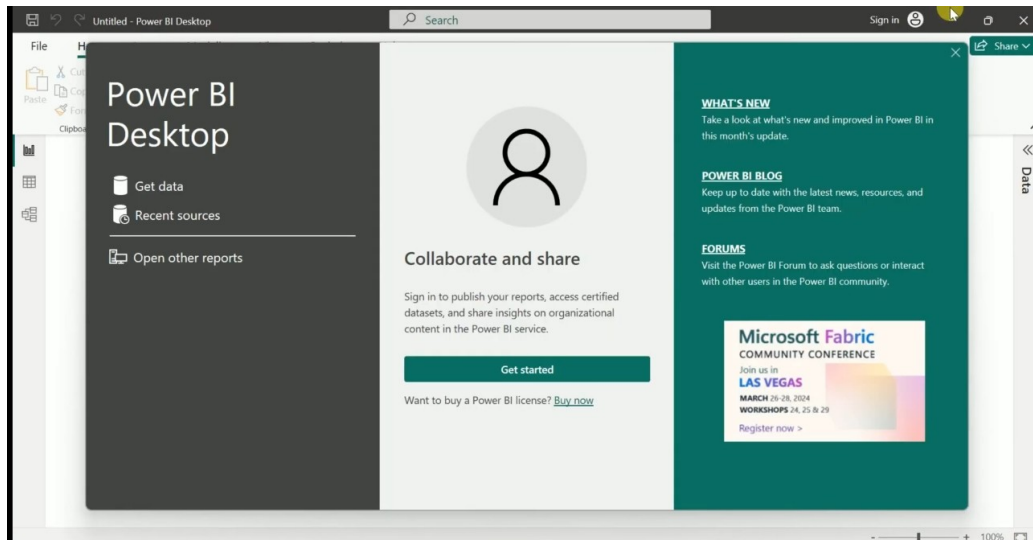
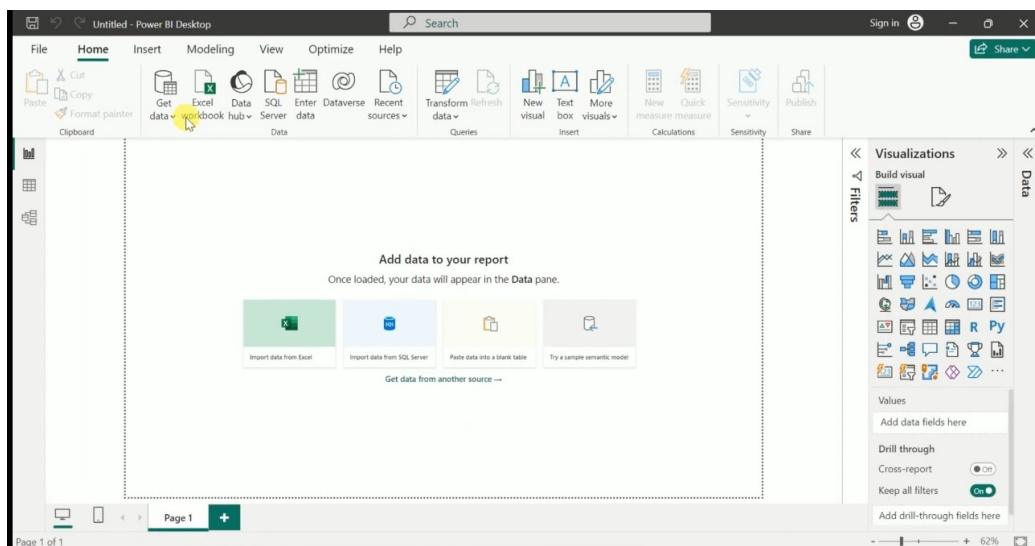


Importing Data from Excel

a) Open Power BI



b) Click on Get Data

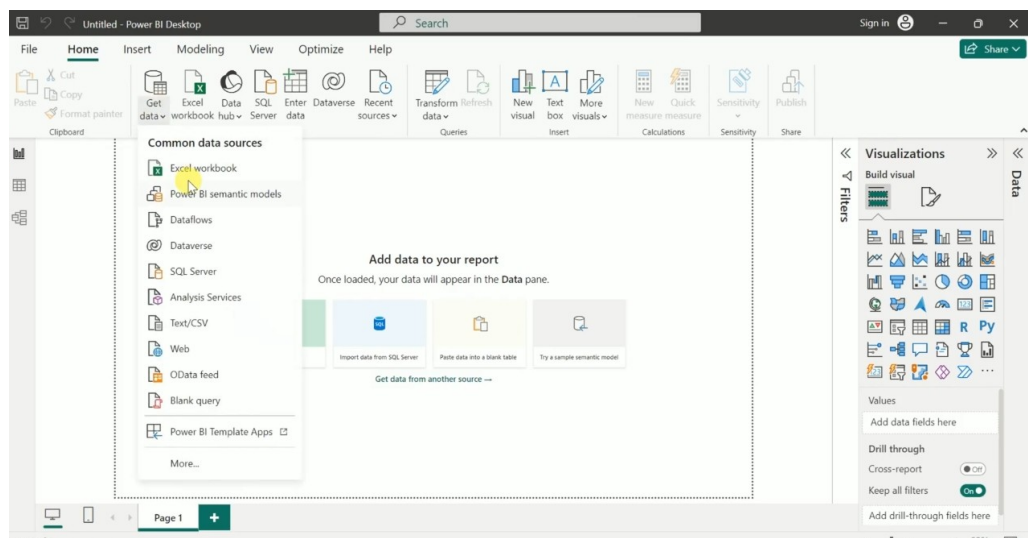


3) Sample Excel Data

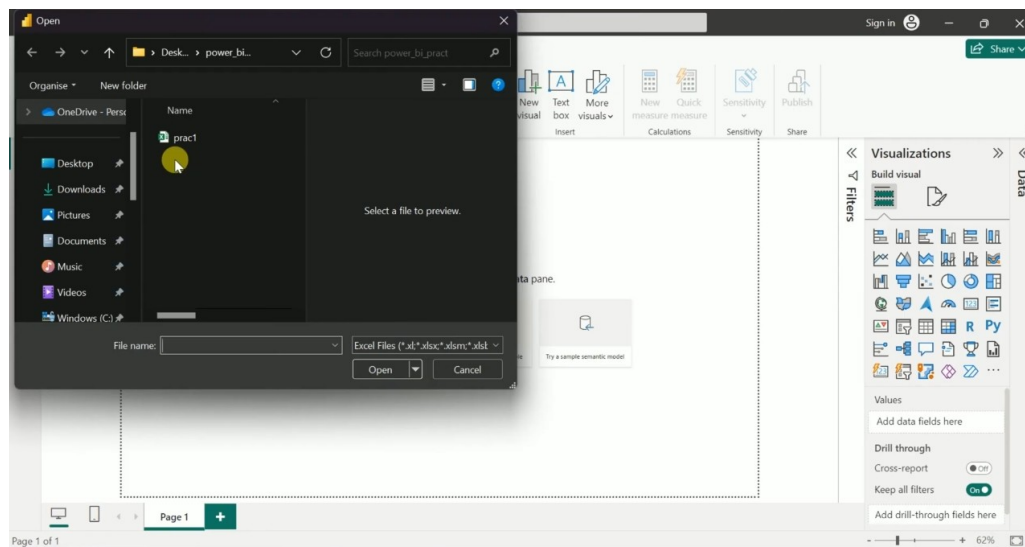
The screenshot shows an Excel spreadsheet with the following data:

	Product	Price	Order
1			
2	Sugar	100	20
3	Soaps	30	25
4	oil	1300	2
5	cookies	40	10
6	perfumes	500	2
7	Moong Dal	30	5
8	Chana Dal	40	4
9	Soyabean	30	5
10	Pulses	50	2
11	Slippers	200	5

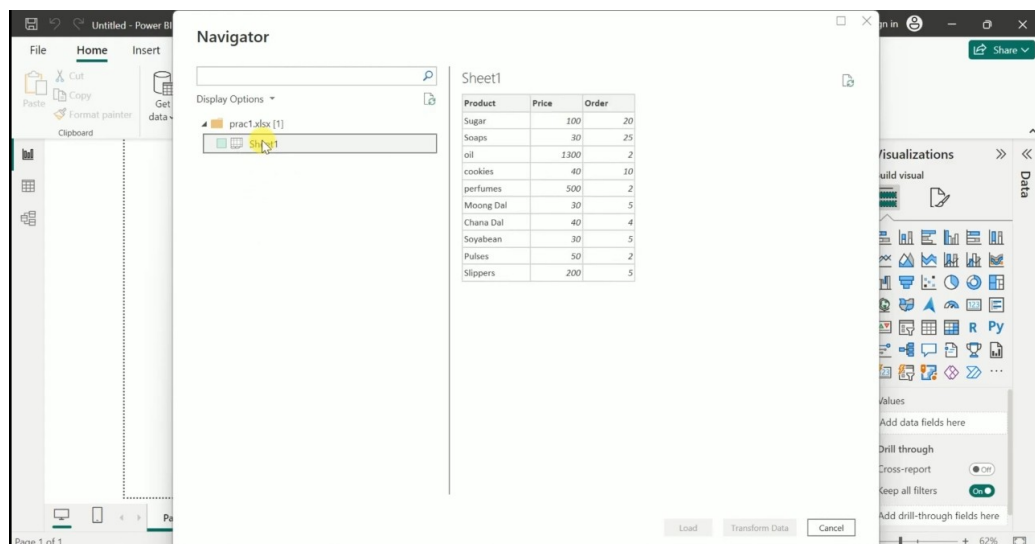
4) Click on Excel Workbook



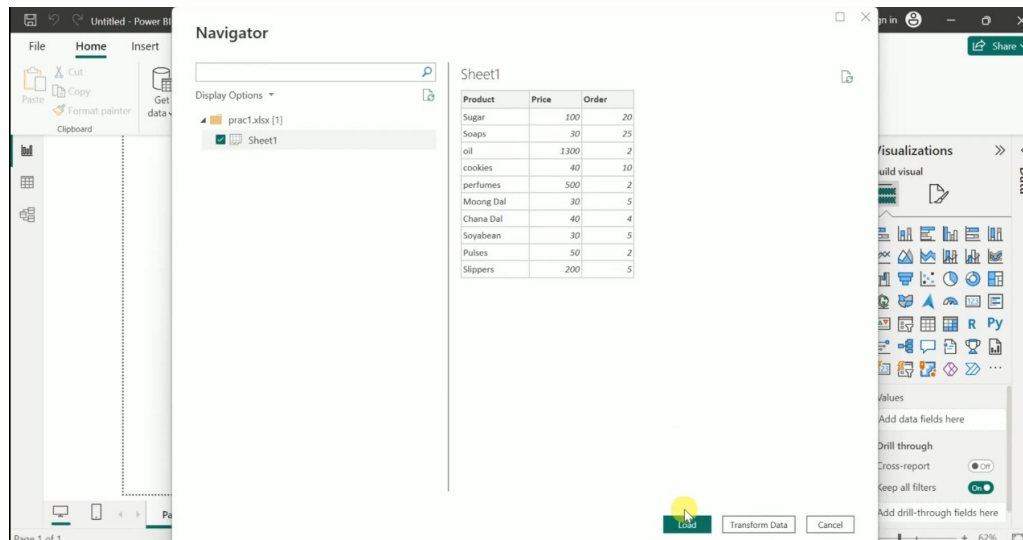
4) Choose the appropriate workbook file



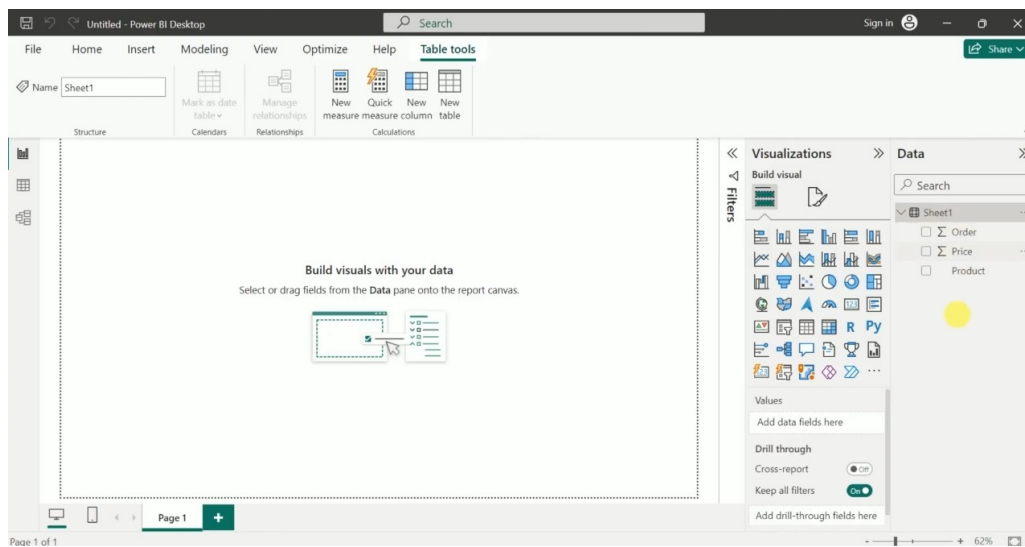
5) Chosen file appears



6) Click on Load

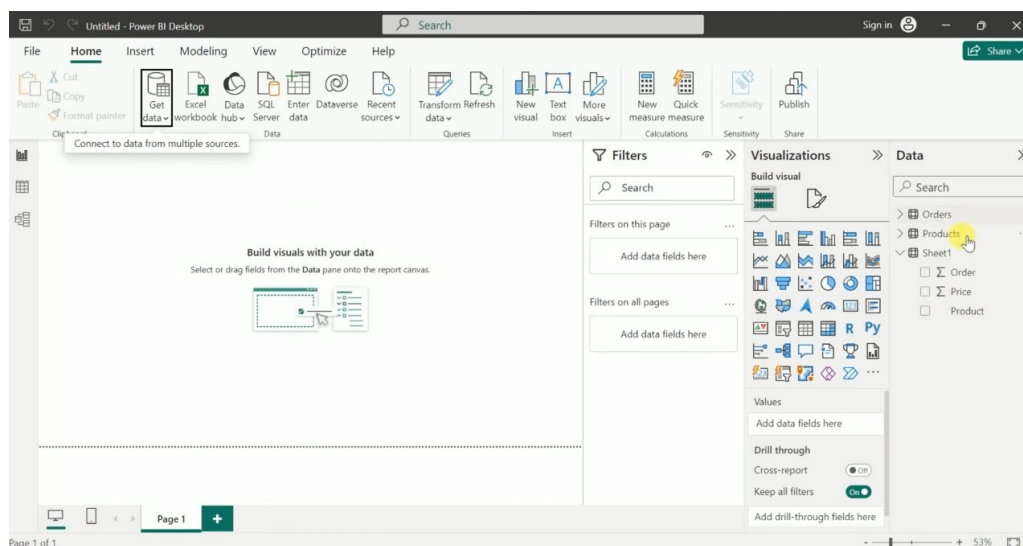


7) Imported Data Appears in the DATA tab

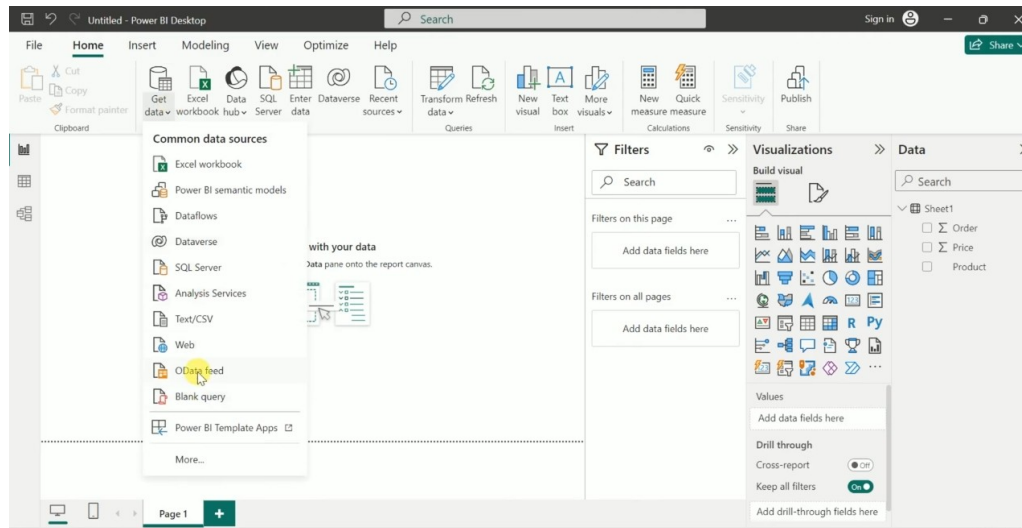


Importing Data from URL

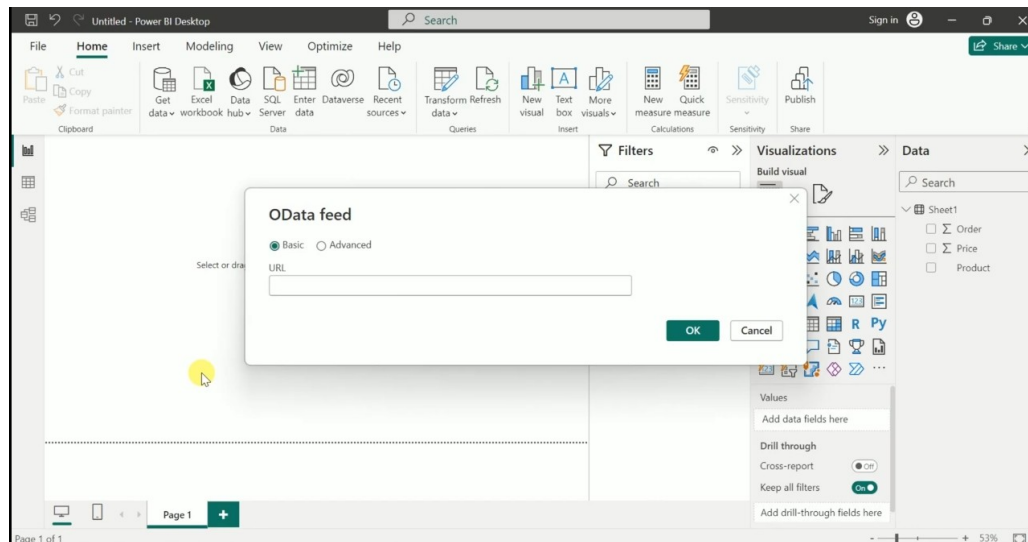
1) Click on Home and then Get Data



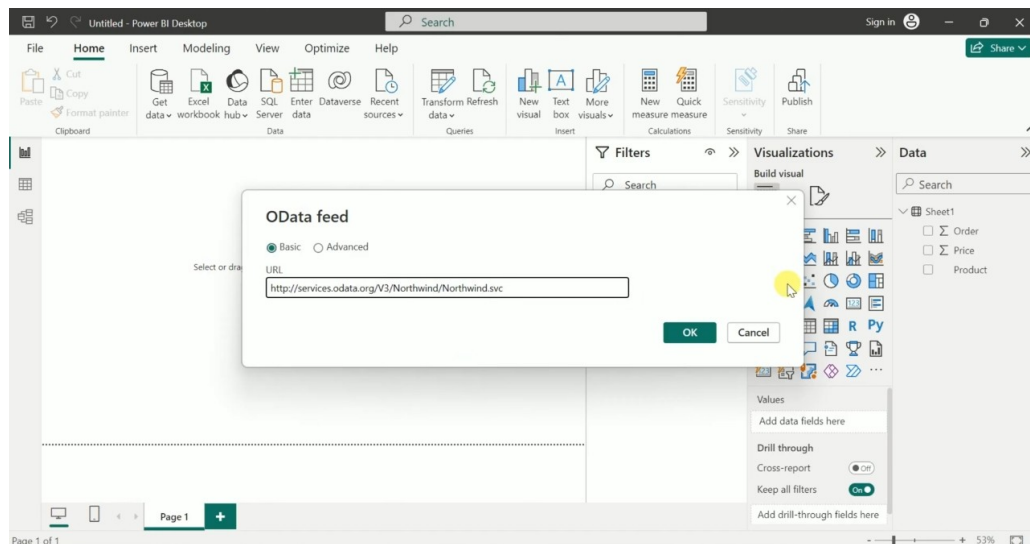
2) Click on Odata Feed



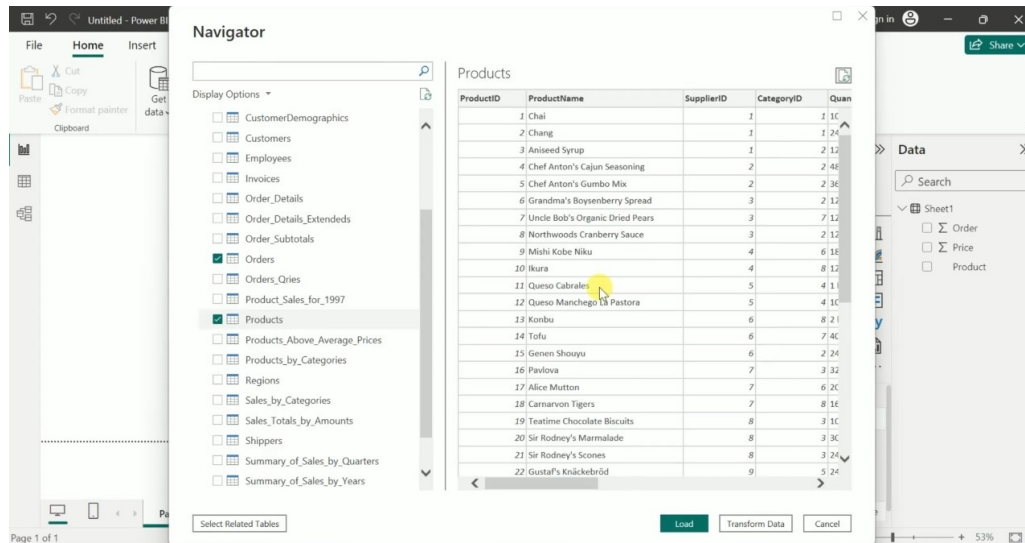
3) Gives a Dialog to input URL



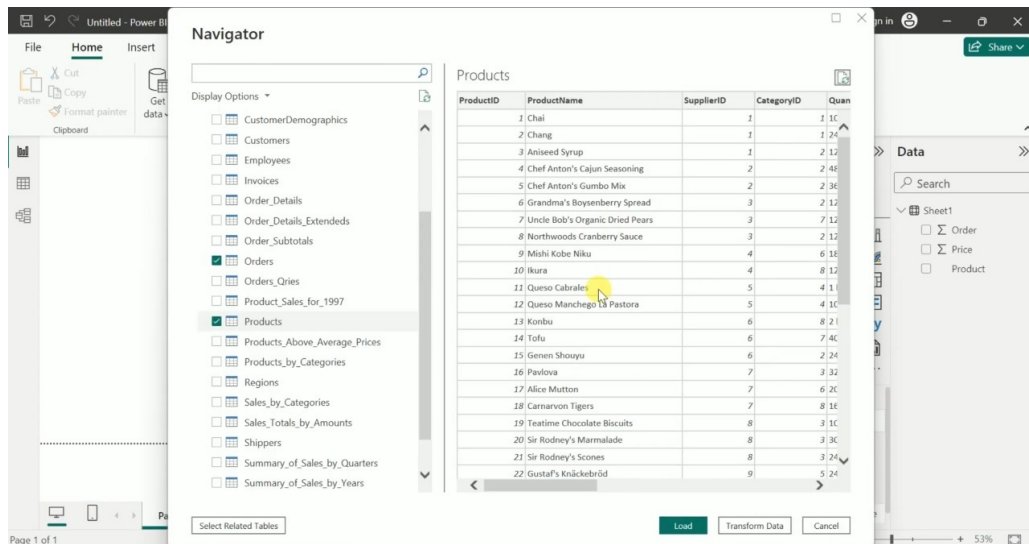
4) Added NorthWind.svc url



5) Selecting Orders & Products to be Imported and can be viewed in preview



6) Click on Load to import



7) Imported Data is visible in DATA tab

